

TIGER INDIA PRIVATE LIMITED

[ Established ] April 18, 2015  
[ Head office ] Gurgaon, Haryana  
[ Business ] Importer & Sales of vacuum bottles and household products for daily use

TIGER CORPORATION

[ Established ] February 3, 1923  
[ Head office ] Osaka, Japan  
[ Production bases ] Japan, China, Vietnam  
[ Sales offices ] Japan, China, Hong Kong, Taiwan, U.S.A., India, Vietnam  
[ Business ] Manufacture and sales of Vacuum Insulated Bottles and household products for daily use



**TIGER INDIA PRIVATE LIMITED**  
Head office  
Unit No. 331, Third Floor, Centrum Plaza  
Golf Course Road, Sector 53, Gurgaon, Haryana 122002, India  
Tel : +91-124-4255-176  
E-mail : marketing@tigercorp.in  
Website : <https://www.tiger-corporation.com/en/ind/>

DISTRIBUTOR :



General Products & Collection Vol.25. 2024

# Our Story

Tiger Corporation is a Japanese manufacturer with 100 years of experience creating high-quality products. Founded in 1923, we have a rich history of designing quality home and kitchen appliances that turn everyday moments into special memories, as well as products that push the limits of what humans are capable of. For example, our thermal control technology by vacuum insulation has been utilized in the transport of space experiment samples from the International Space Station to earth via the SpaceX rocket.

The vacuum bottle is the origin on which this company was founded. It's a product that not only functions to keep drinks warm; it plays the role of a magic tool that warms the hearts of those who drink from it. Tiger Corporation will always continue to help put smiles on peoples' faces so they can share their smiles with others, which will help people create happy and comfortable lifestyles.

1923

Founded in Osaka, Japan.

1931

Expanded the product categories.

1950

Tiger's first handy jug made of bakelite was launched.

1953

Tiger's first patented rice warmer was launched.

1968

The Japanese traditional design was introduced.

1970

Tiger's first food holder "Takitate" was launched.

1971

Tiger launched the industry's first handy jug with electric lid.



1986

The stainless steel inner flask was introduced for Tiger's vacuum insulated flasks.

1998

Tiger's first vacuum electric water heater was launched.

2006

Tiger launched the industry's first ceramic inner pot IH rice cooker.

2008

Tiger's first electric kettle was launched.

2018

Started supply to the space industry.

2021

Tiger's first vacuum insulated bottle for carbonated drinks was launched.

2024

The 100th anniversary model was launched.





Our Vision



Spreading joyous harmony throughout the world.  
Established in 1923, Japan quality

Freshly cooked warm rice, heartwarming hot coffee and refreshing cold tea.

Happiness of having delicious meal. Happiness of spending time around the dining table.

TIGER spreads smiles at the dining table throughout the world by magic inside our products.

Contents

Vacuum  
Insulated Bottle

9



Super Clean Plus



Super Clean



Antibacterial Coating



Antibacterial Lid Stopper



Antibacterial Gasket



Easy-to-remove Gasket



One-piece lid



Ultra Light



Smooth Rimmed Mouth



Wide Mouth



Ice Strainer



Automatic Lock



Slide Lock



Stainless Steel Straw



Natural Easy Grip Handle



Foldable Handle



Tea Infuser



Washable Bottle Sling



Dishwasher-safe



Hands-free Carrying Strap



Plastic Bottom Base



Super Grip Base



Bottle Boot



Super Protective Bumper



Keep Fizzy



Keep Hot



Keep Cold



BIO GUARD



BIO GUARD+




JPN  
Made In Japan



SIAA  
ISO 22196  
Anti Bacteria  
For details, please refer to P30

Food Jars  
Lunch Boxes

23



Microwavable Containers

Handy Jugs  
Air Pump Jugs

27



Safety Lock



Removable Pipe & Lid



360° Swivelable Base

Electric Kettles

29

Antibacterial Finished Products

30

■ About the heat-retention and cold-retention properties of the products listed in this catalog

Heat retention has been calculated under the condition of adding hot water at 95°C±1°C and leaving it in a room temperature of 20°C±2°C for 1 hour, 6 hours, 10 hours or 24 hours.

Vacuum Insulated Bottles: 1 hr, 6 hrs or 24 hrs  
Hundy Jugs / Air Pump Jugs: 10 hrs  
Lunch Boxes: 6 hrs

Cold retention has been calculated under the condition of adding cold water at 4°C±1°C and leaving it in a room temperature of 20°C±2°C for 1 hour, 6 hours or 10 hours.

Vacuum Insulated Bottles: 1 hr, 6 hrs  
Hundy Jugs: 10 hrs  
Lunch Boxes: 6 hrs

Please check our official website for the latest information.

3

4





## Sustainability at Tiger

01

### No conflict minerals

We do not use minerals that have been mined and sold to fund military conflicts. Furthermore, we will not deal with any company that employs workers younger than the age of sixteen.



02

### No fluorine

Considering the potential harm to both human health and the environment, we do not use fluorine coatings in our bottles.



03

### YES our own factories

To ensure that we never compromise the health of our customers, we manufacture all eight million bottles per year in-house at our three factories.



04

### No plastic waste

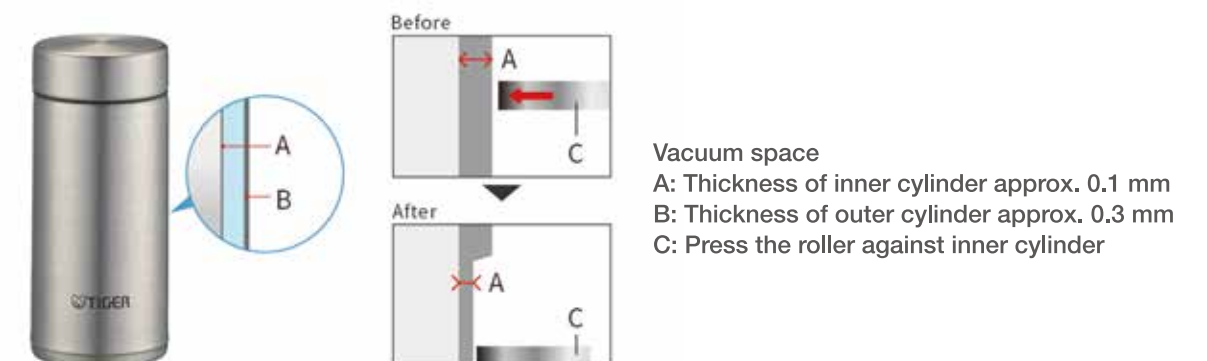
By popularizing the use of personal reusable bottles, we aim to reduce the amount of plastic waste in the world.



## Our Innovation

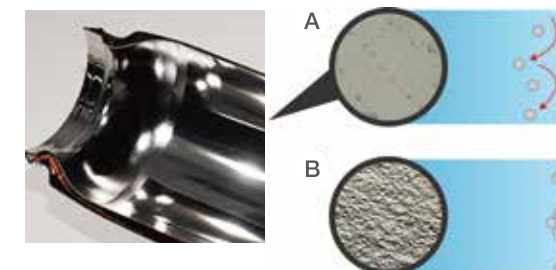
### “Hyper-spin” Manufacturing Process

Tiger’s proprietary stainless-steel spinning reduces the thickness to produce an extremely light bottle.



### “Super Clean Plus” Surface Technology

The inside of Tiger’s bottles has smooth and polished surface that is tough against stains and rust.



A: With Super Clean Plus  
The smoothly finished surface is tough against stains and rust.

B: Without Super Clean Plus  
Stains and odors remain in the crevices of the rough surface.

### Superior Temperature Retention

Tiger's vacuum insulation technology keeps drinks hotter and colder for hours.

The copper foil in between the two stainless-steel walls supports temperature retention.

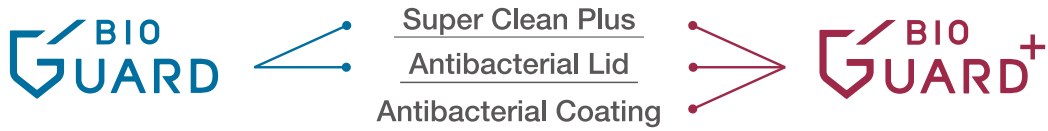
Cold drinks will not cause condensation on the outside of the bottle and hot drinks will not cause the bottle to become too hot to handle.







## Our Innovation



### BioGuard

Tiger's proprietary hygiene design "BioGuard" that adopts an antibacterial finishing and Super Clean Plus.

### Super Clean Plus

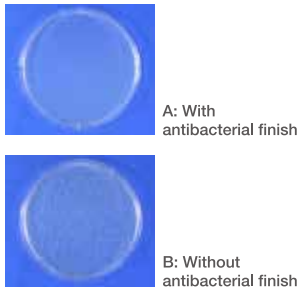
The inside of Tiger's bottles has smooth and polished surface that is tough against stains and rust. For details, please refer to P6.

### Antibacterial Finishing

In most cases, bacteria adversely affect humans when they increase massively in excess of a certain amount.

The antibacterial finishing prevents the growth of bacteria so that the product surface can be kept hygienic.

On the inner stopper, gasket and coating material with the antibacterial finish, the growth of bacteria is prevented by 99% or more, compared with untreated ones; this means the bottle can be used hygienically at anytime.



### Certified by SIAA

The SIAA marks represent self-certification and conformity to the guidelines of this Society by its members and the marks for disclosure of information on quality and safety indicate full disclosure of such information. The SIAA marks can only be used by SIAA members, and the Society monitors the operation of the labeling methods for strict market control of the voluntary standards.



### SIAA marks represent three types of security

<p>Antimicrobial property</p>	<p>The proportion of bacteria on the surface of the product is 1/100 or less of that on the surface of a non-treated product, and the antimicrobial effect remains after durability tests. Antimicrobial properties are determined from the results of tests conducted in accordance with the ISO 22196 international standard.</p>	<p>Safety</p>	<p>The criteria for safety established by SIAA have been met.</p>
<p>Appropriate labelling</p>			<p>On exhibit are the types and treated parts of antimicrobial agents.</p>

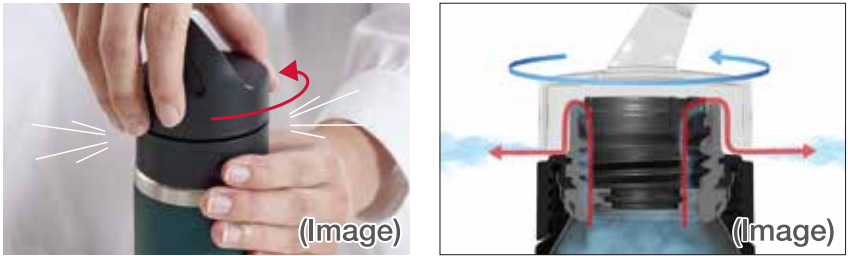
\*For the purpose of performance improvement, designs, specifications and parts shown in this publication are subject to change without notice.



## Fizzy Series

### Depressurization Cap

The carbon dioxide is released while screwing the lid to prevent carbonated drinks from spilling all over when opening it.



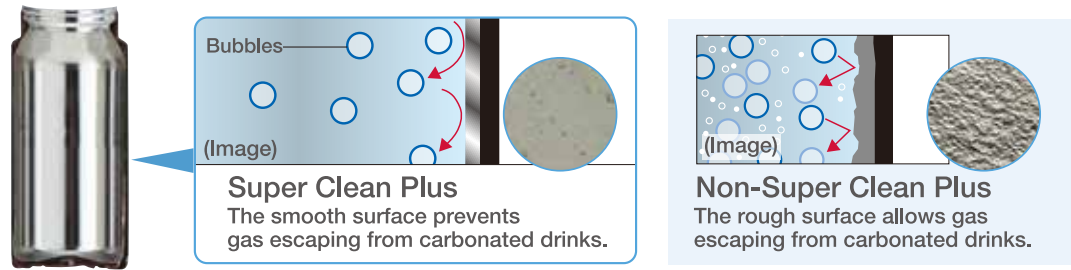
### Safety Valve

The pressure is controlled by the installed valve when abnormally increasing in internal pressure of the bottle to prevent carbonated drinks from exploding.



### Super Clean Plus

Tiger's bottles feature a "Super Clean Plus" surface technology which produces an ultra-smooth surface capable of preventing gas escaping from carbonated drinks.



\*For the purpose of performance improvement, designs, specifications and parts shown in this publication are subject to change without notice.





Vacuum Insulated Bottles

Lid Designed Specially for Carbonated Drinks



A better world,one sip at a time.  
#Tiger Bottle

Screw Lid

NEW



Lake Blue (AL) Stone Black (KK) Eaglet White (WK)

MKB-T036 0.36L



Lake Blue (AL) Stone Black (KK) Eaglet White (WK)

MKB-T048 0.48L



Lake Blue (AL) Stone Black (KK) Eaglet White (WK)

MKB-T060 0.60L



Model No.	MKB-T036	MKB-T048	MKB-T060
Capacity	0.36L	0.48L	0.6L
Heat retention	85°C (1h) / 63°C (6h)	86°C (1h) / 68°C (6h)	87°C (1h) / 71°C (6h)
Cold retention	9°C (6h)	8°C (6h)	7°C (6h)
Size/Weight	6.6×6.6×19.9cm/0.19kg	6.6×6.6×24.3cm /0.22kg	6.6×6.6× 28.5cm /0.24kg
Qty/Ctn(Measurement)	20pcs(0.026m³)	20pcs(0.032m³)	20pcs(0.037m³)
Gross Weight	5.1kg	5.8kg	6.5kg
JAN	(AL)4904710438336 (KK)4904710438329 (WK)4904710438312	(AL)4904710438343 (KK)4904710438350 (WK)4904710438367	(AL)4904710438381 (KK)4904710438398 (WK)4904710438374



Copper (DC) Emerald (GE) Steel (KS)

MTA-T050 0.5L



Copper (DC) Emerald (GE) Steel (KS) Eaglet White (WK) Lake Blue (AL)

MTA-T080 0.8L



Copper (DC) Emerald (GE) Steel (KS) Eaglet White (WK) Lake Blue (AL)

MTA-T120 1.2L

\*The bottle stopper and loop handle are processed with an antimicrobial substance to ensure a clean surface.



Copper (DC) Emerald (GE) Steel (KS)

MTA-T150 1.5L

SIAA  
ISO 22196  
Anti Bacteria  
(Lid & Stopper)

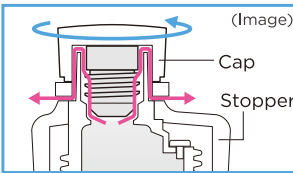
BIO  
GUARD



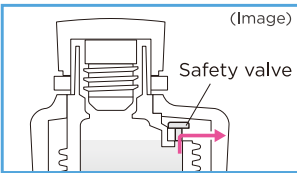
(Image)



(Image)



(Image)



(Image)

Model No.	MTA-T050	MTA-T080	MTA-T120	MTA-T150
Capacity	0.5L	0.8L	1.2L	1.5L
Cold retention	8°C (6h)	7°C (6h)	7°C (6h)	6°C (6h)
Size/Weight	10.5×7.5×21.2(cm) /0.29kg	10.5×7.5×29.3(cm) /0.39kg	10.5×9.1×29.1(cm) /0.47kg	10.5×9.1×34.2(cm) /0.53kg
Qty/Ctn(Measurement)	20pcs(0.041m³)	12pcs(0.034m³)	12pcs(0.040m³)	6pcs(0.024m³)
Gross Weight	7.5kg	5.8kg	7.1kg	4.2kg
JAN	(DC)4904710432815 (GE)4904710432808 (KS)4904710432822	(DC)4904710432846 (GE)4904710432853 (KS)4904710432839 (WK)4904710437346 (AL)4904710437360	(DC)4904710432877 (GE)4904710432860 (KS)4904710432884 (WK)4904710437407 (AL)4904710437384	(DC)4904710432785 (GE)4904710432792 (KS)4904710432778

## NEW One-piece Lid

It's dishwasher safe, and with the easy-to-clean stopper with the integrated gasket, cleaning is a breeze!



There's no need to attach or detach the gasket, so you never have to worry about forgetting or losing it.

MMP-W / MMZ-W



### Developed Cap with a focus on washability

Featuring a gasket that is integrated with the stopper, the One-piece Lid can be cleaned without hassle. The gasket part is exposed, making it easy to scrub with a sponge and clean.



### Entirely dishwasher-safe bottle

The entire stopper and body are dishwasher-safe. Washing your bottle has never been easier. \*Remove the stopper from the main body before putting them in the dishwasher.



## Screw Lid

NEW



Sea Blue (AP) Snow White (WP) Sun Yellow (YP)



Cacao Beige (CP) Stone Black (KK) Magnolia Pink (PP)



Model No.	MMP-W020	MMP-W030
Capacity	0.2L	0.3L
Heat retention	83°C (1h) / 58°C (6h)	86°C (1h) / 66°C (6h)
Cold retention	10°C (6h)	10°C (6h)
Size/Weight	5.8×5.8×12.9(cm) / 0.11kg	5.8×5.8×12.6(cm) / 0.13kg
Qty/Ctn(Measurement)	20pcs(0.013m <sup>3</sup> )	20pcs(0.017 m <sup>3</sup> )
Gross Weight	3.1 kg	3.6 kg
JAN	(AP) 4904710438268 (WP) 4904710438251 (YP) 4904710438275	(CP) 4904710438299 (KK) 4904710438282 (PP) 4904710438305





Screw Lid

NEW



Model No.	MMZ-W035	MMZ-W050	MMZ-W060
Capacity	0.35L	0.5L	0.6L
Heat retention	86°C (1h) / 67°C (6h)	88°C (1h) / 73°C (6h)	89°C (1h) / 75°C (6h)
Cold retention	8°C (6h)	8°C (6h)	7°C (6h)
Size/Weight	6.6×6.6×16.4(cm) / 0.16kg	6.6×6.6×21.6(cm) / 0.19kg	6.6×6.6×25.1(cm) / 0.22kg
Qty/Ctn(Measurement)	20pcs(0.020m <sup>3</sup> )	20pcs(0.026 m <sup>3</sup> )	20pcs(0.030m <sup>3</sup> )
Gross Weight	4.4 kg	5 kg	5.9 kg
JAN	(KK) 4904710438497 (VW) 4904710438510 (WK) 4904710438503	(GW) 4904710438558 (KK) 4904710438534 (VW) 4904710438527 (WK) 4904710438541 (CW) 4904710438565	(GW) 4904710438572 (KK) 4904710438589 (VW) 4904710438596



Push-Button Lid

NEW



Model No.	MTA-B080	MTA-B100	MTA-B150
Capacity	0.8L	1.0L	1.5L
Cold retention	7°C (6h)	7°C (6h)	7°C (6h)
Size/Weight	7.5×8.5×31.2(cm) / 0.37kg	9.1×9.1×27.5(cm) / 0.46kg	9.1×9.1×36.1(cm) / 0.55kg
Qty/Ctn(Measurement)	12pcs(0.031m <sup>3</sup> )	12pcs(0.039 m <sup>3</sup> )	6pcs(0.026 m <sup>3</sup> )
Gross Weight	5.8 kg	7kg	4.2 kg
JAN	(KK) 4904710438176 (WK) 4904710438183 (XM) 4904710438190	(KK) 4904710437056 (WK) 4904710437032 (XM) 4904710437049	(KK) 4904710437117 (WK) 4904710437100 (XM) 4904710437094







GET  
ACTIVE  
*in your daily life*



Koala (HZ) Lime (YZ) Lilac (VZ)  
**MCZ-S040 0.4L**



Stargaze (KC) Honu (AC) Arctic Wolf (WZ) Lilac (VZ)  
**MCZ-S060 0.6L**



Titanium Ore (XZ) Pacific Beach (CZ) Moss Forest (GZ)  
**MCZ-S080 0.8L**



**SIAA**  
ISO 22196  
Anti Bacteria  
(Lid & Stopper)

**BIO GUARD**

\*The bottle lid and stopper are processed with an antimicrobial substance to ensure a clean surface.

Model No.	MCZ-S040	MCZ-S060	MCZ-S080
Capacity	0.4L	0.6L	0.8L
Heat retention	84°C (1h) / 61°C (6h)	85°C (1h) / 67°C (6h)	86°C (1h) / 72°C (6h)
Cold retention	10°C (6h)	9°C (6h)	8°C (6h)
Size/Weight	7.8×7.8×19.6cm/0.24kg	7.8×7.8×24.5cm /0.29kg	7.8×7.8× 29.4cm /0.32kg
Qty/Ctn(Measurement)	20pcs(0.036m³)	20pcs(0.044m³)	20pcs(0.050m³)
Gross Weight	6.7kg	7.9kg	8.9kg
JAN	(HZ)4904710437568 (YZ)4904710437582 (VZ)4904710437544	(KC)4904710431931 (AC)4904710431900 (WZ)4904710431955 (VZ)4904710437605	(XZ)4904710432044 (CZ)4904710431986 (GZ)4904710437629



One Push Lid



Fog Blue (AF) Red Ochre (RO) Clear Stainless (XC)  
**MCS-A050 0.5L**

- Hygienic straw made of stainless steel
- Push button locking lid with easy-to-carry handle
- Plastic bottom base

**SIAA**  
ISO 22196  
Anti Bacteria  
(Stopper)



The GOOD DESIGN AWARD is a movement aimed at enriching our lives and society through design. Since the foundation in 1957, it has been commonly known together with the "G Mark", the symbol of winning the award.

\*The bottle stopper is processed with an antimicrobial substance to ensure a clean surface.

Model No.	MCS-A050
Capacity	0.5L
Cold retention	8°C (6h)
Size/Weight	6.6×7.0×24.5cm/0.23kg
Qty/Ctn(Measurement)	20pcs(0.032m³)
Gross Weight	6.2kg
JAN	(AF) 4904710432532 (RO) 4904710432556 (XC) 4904710432570



Push button locking lid  
Easy to open with one hand. Unlock by pushing button and open with a finger through the loop.



Hygienic straw made of stainless steel





**MKA-K048 0.48L**

**MKA-K060 0.48L**

**Eliminating the bottom**  
We made it easy to press without getting your fingers caught

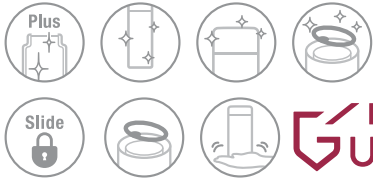


Lid opens with one push



Locked easily with one hand

**SIAA**  
ISO 22196  
**Anti Bacteria**  
(Coat & Lid)



**BIO GUARD<sup>+</sup>**

Model No.	MKA-K048	MKA-K060
Capacity	0.48L	0.6L
Heat retention	86°C (1h) / 67°C (6h)	76°C (1h) / 70°C (6h)
Cold retention	8°C (6h)	7°C (6h)
Size/Weight	6.6×7.3×22(cm) / 0.20kg	6.6×7.3×26.2(cm) / 0.23kg
Qty/Ctn(Measurement)	20pcs(0.027m <sup>3</sup> )	20pcs(0.032m <sup>3</sup> )
Gross Weight	5.4 kg	6.1 kg
JAN	(WK) 4904710435113 (KK) 4904710435106 (RK) 4904710435090 (GK) 4904710435144 (AK) 4904710435137	(WK) 4904710435151 (KK) 4904710435168 (AK) 4904710435182



**MCT-K050 0.5L**

**MCT-K060 0.6L**

**SIAA**  
ISO 22196  
**Anti Bacteria**  
(Lid, Base & Coat)



**BIO GUARD<sup>+</sup>**

Model No.	MCT-K050	MCT-K060
Capacity	0.5L	0.6L
Heat retention	86°C (1h) / 69°C (6h)	87°C (1h) / 72°C (6h)
Cold retention	8°C (6h)	8°C (6h)
Size/Weight	6.6×7×23.1(cm) / 0.21kg	7×7.4×24.6(cm) / 0.23kg
Qty/Ctn(Measurement)	20pcs(0.030m <sup>3</sup> )	20pcs(0.033m <sup>3</sup> )
Gross Weight	5.6 kg	6.2 kg
JAN	(KK) 4904710435236 (WT) 4904710435243 (VT) 4904710435229 (AT) 4904710435267 (GT) 4904710435250	(KK) 4904710435281 (WT) 4904710435274 (VT) 4904710435298 (GT) 4904710435304





Stainless  
(XS)



Easy-to-remove gasket

MEA-B048 0.48L

Model No.	MEA-B048
Capacity	0.48L
Heat retention	86°C (1h) / 67°C (6h)
Cold retention	8°C (6h)
Size/Weight	8.2×6.6×22.8cm/0.18kg
Qty/Ctn(Measurement)	30pcs(0.043m <sup>3</sup> )
Gross Weight	7.4kg
JAN	(XS)4904710432501

Cerulean Blue  
(AC)

Soleil Orange  
(DS)

Fresh Green  
(GF)

Air White  
(WA)

Titanium Ore  
(XZ)

Plus

ISO 22196

Anti Bacteria

(Stopper)

\*The stopper is processed with an antimicrobial substance to ensure a clean surface.

MCY-K050 0.5L

MCY-K060 0.6L

Model No.	MCY-K050	MCY-K060
Capacity	0.5L	0.6L
Heat retention	86°C (1h) / 71°C (6h)	87°C (1h) / 73°C (6h)
Cold retention	8°C (6h)	8°C (6h)
Size/Weight	6.6×6.6×22.7(cm) / 0.21kg	6.9×6.9×24.2(cm) / 0.23kg
Qty/Ctn(Measurement)	20pcs(0.030m <sup>3</sup> )	20pcs(0.033 m <sup>3</sup> )
Gross Weight	6.0 kg	6.7 kg
JAN	(AC) 4904710433119 (DS) 4904710433102 (GF) 4904710433126	(WA)4904710433140 (XZ) 4904710433133

Whale  
(A)

Rabbit  
(P)

Penguin  
(H)

Bear  
(W)

Plus

Auto

Press down

Push in the button

MCT-A035 0.35L

MCT-A050 0.5L

- Open and lock with one hand for quick accessibility
- Automatic lock and spill-proof
- Plastic bottom base helps place the bottle quietly

Model No.	MCT-A035	MCT-A050
Capacity	0.35L	0.5L
Heat retention	85°C (1h) / 63°C (6h)	86°C (1h) / 69°C (6h)
Cold retention	9°C (6h)	8°C (6h)
Size/Weight	6.6×7.0×18cm/0.17kg	6.6×7.0×23.1cm/0.21kg
Qty/Ctn(Measurement)	20pcs(0.024m <sup>3</sup> )	20pcs(0.030m <sup>3</sup> )
Gross Weight	4.9kg	6.0kg
JAN	(A) 4904710430613 (P) 4904710430606	(H) 4904710430620 (W)4904710430637

MMJ-A361 0.36L  
MMJ-A481 0.48L



The above images are 0.48L.

MMJ-A601 0.6L



The above images are 0.6L.



Open with one push



- Vacuum insulated stainless double wal
- One hand lock & one push open
- Lock diagram
- Universal design
- Washable entirely

Model No.	MMJ-A361	MMJ-A481	MMJ-A601
Capacity	0.36L	0.48L	0.6L
Heat retention	85°C(1h) / 62°C(6h)	86°C(1h) / 67°C(6h)	87°C(1h) / 71°C(6h)
Cold retention	9°C(6h)	8°C(6h)	7°C(6h)
Size/Weight	6.6×7.2×17.6cm / 0.17kg	6.6×7.2×21.8cm / 0.19kg	6.6×7.2×26.0cm / 0.23kg
Qty/Ctn(Measurement)	20pcs(0.021m³)	20pcs(0.027m³)	20pcs(0.031m³)
Gross Weight	4.9kg	5.5kg	6.3kg
JAN	(AM) 4904710428351 (PB) 4904710428368 (TC) 4904710428375 (WM) 4904710428382 (XC) 4904710428399	(AM) 4904710428412 (PB) 4904710428429 (TC) 4904710428436 (WM) 4904710428443 (XC) 4904710428405	(AM)4904710428450 (PB) 4904710428467 (XC)4904710428474

MSC-B035 0.35L  
MSC-B050 0.50L



Stainless Blue (XF)



Model No.	MSC-B035	MSC-B050
Capacity	0.35L	0.50L
Heat retention	70°C(6h) / 40°C(24h)	74°C(6h) / 48°C(24h)
Cold retention	-	-
Size/Weight	6.8×6.8×18.9cm / 0.31kg	6.8×6.8×23.8cm / 0.36kg
Qty/Ctn(Measurement)	12pcs(0.016m³)	12pcs(0.019m³)
Gross Weight	4.6kg	5.4kg
JAN	(XF) 4904710341933	(AM) 4904710341971

MCX-A351 0.35L  
MCX-A501 0.50L



The above images are 0.50L.



- Vacuum insulated stainless double wall
- One push open and automatic lock
- Entirely washable

MCX-A601 0.6L



The above images are 0.6L.



Open and auto lock with slide push

Open the lid



Model No.	MCX-A351	MCX-A501	MCX-A601
Capacity	0.35L	0.5L	0.6L
Heat retention	85°C(1h) / 63°C(6h)	86°C(1h) / 69°C(6h)	87°C(1h) / 72°C(6h)
Cold retention	9°C(6h)	8°C(6h)	8°C(6h)
Size/Weight	6.6×6.6×18.0cm / 0.17kg	6.6×6.6×23.1cm / 0.21kg	6.9×6.9×24.6cm / 0.23kg
Qty/Ctn(Measurement)	20pcs(0.024m³)	20pcs(0.030m³)	20pcs(0.033m³)
Gross Weight	4.9kg	5.9kg	6.4kg
JAN	(AK) 4904710424766 (KL) 4904710424773 (PO) 4904710424780	(AK) 4904710424827 (KL) 4904710424810 (PO) 4904710424834	(KM) 4904710424797 (ST) 4904710424803

MHK-A

1.2L  
1.49L  
1.65L  
2.0L



Clear Stainless (XC)

Protecting guard



Retractable handle

- Vacuum insulated stainless double wall
- With carrying strap
- Take-apart stopper
- For outdoor use
- 7.0cm wide mouth
- Retractable handle
- Washable entirely
- Protecting guard

Model No.	MHK-A120	MHK-A150
Capacity	1.20L	1.49L
Heat retention	78°C (6h) / 55°C (24h)	80°C (6h) / 57°C (24h)
Size / Weight	12.3×13.1×26.5cm / 0.95kg	12.3×13.1×30.5cm / 1.06kg
Qty/Ctn(Measurement)	6pcs(0.030m³)	6pcs(0.035m³)
Gross Weight	6.8kg	7.7kg
JAN	4904710372524	4904710372562

Model No.	MHK-A170	MHK-A200
Capacity	1.65L	2.00L
Heat retention	80°C (6h) / 58°C (24h)	81°C (6h) / 62°C (24h)
Size / Weight	12.3×13.1×32.4cm / 1.11kg	12.3×13.1×37.1cm / 1.24kg
Qty/Ctn(Measurement)	6pcs(0.037m³)	6pcs(0.042m³)
Gross Weight	8.0kg	9.0kg
JAN	4904710372609	4904710372647

The above images are 1.2L.





Food Jar



Bengal Tiger  
(YE)



Moss Forest  
(GZ)



Arctic Wolf  
(WZ)



Rhinoceros  
(HC)

**MCJ-K050** 0.5L

**MCJ-K075** 0.75L

Model No.	MCJ-K050	MCJ-K075
Capacity	0.5L	0.75L
Heat retention	62°C (6h)	70°C (6h)
Cold retention	10°C (6h)	8°C (6h)
Size/Weight	9.9×9.9×11.6cm/0.33kg	9.9×9.9×15.3cm/0.39kg
Qty/Ctn(Measurement)	12pcs(0.019m³)	12pcs(0.025m³)
Gross Weight	5kg	5.8kg
JAN	(YE)4904710434963 (GZ)4904710434970	(WZ)4904710434987 (HC)4904710434994



**SIAA**  
ISO 22196  
Anti Bacteria  
(Lid)

\*The lid and gasket are processed with an antimicrobial substance to ensure a clean surface.



Lunch Box  
LWR-A092  
3 container



CHAMPAGNE GOLD(NN)



PINK(PG)

- Vacuum insulated stainless double wall
- Compact design
- Microwavable containers
- Exclusive bag

Model No.	LWR-A092	1.5Cups
Capacity	Rice container 0.32L Side dish container 0.23L Soup container 0.21L	
Heat retention	66°C (6h)	
Size / Weight	10.9×10.7×21.5cm / 0.67kg	
Qty/Ctn (Measurement)	6pcs (0.027m³)	
Gross Weight	5.9kg	
JAN	(NN) 4904710342329 (PG) 4904710342336	

BPA free Made of BPA-free plastic, stainless steel and silicone rubber

**LWR-A072**  
2 container



CHAMPAGNE GOLD(NN)



PINK(PG)

LWR-A072 does not include Soup container.

Capacity	LWR-A072	LWR-A092
• Rice container	0.32L	0.32L
• Side dish container	0.23L	0.23L
• Soup container	-	0.21L

Model No.	LWR-A072	1.5Cups
Capacity	Rice container 0.32L Side dish container 0.23L	
Heat retention	50°C (6h)	
Size / Weight	10.9×10.7×15.3cm / 0.48kg	
Qty/Ctn (Measurement)	6pcs (0.023m³)	
Gross Weight	4.6kg	
JAN	(NN) 4904710342312 (PG) 4904710342305	

BPA free Made of BPA-free plastic, stainless steel and silicone rubber



LWU-F200

4 container



Warm Silver (SE)

Capacity	
• Rice container	0.61L
• Side dish container	0.3L (×2)
• Soup container	0.27L



- Vacuum insulated stainless double wall
- Four compartments (1 soup, 1 rice and 2 side dish containers)
- Microwavable containers
- Exclusive bag

Model No.	LWU-F200	3Cups
Capacity	Rice container 0.61L Side dish container 0.30L (×2) Soup container 0.27L	
Heat retention	70°C (6h)	
Size / Weight	15.0×14.7×25.6cm / 1.40kg	
Qty/Ctn (Measurement)	6pcs (0.052m³)	
Gross Weight	10.3kg	
JAN	4904710387726	

BPA free Made of BPA-free plastic, stainless steel and silicone rubber

LWU-B

3 container



Warm Silver (SE)

The above image is LWU-B200

Capacity	LWU-B170	LWU-B200
• Rice container	0.61L	0.8L
• Side dish container	0.34L	0.34L
• Soup container	0.27L	0.27L



- Vacuum insulated stainless double wall
- Microwavable containers
- Exclusive bag

Model No.	LWU-B170	LWU-B200
	3Cups	4Cups
Capacity	Rice container 0.61L Side dish container 0.34L Soup container 0.27L	
Heat retention	69°C (6h)	
Size / Weight	15.0×14.7×21.4cm / 0.90kg	
Qty/Ctn (Measurement)	6pcs (0.043m³)	
Gross Weight	9.3kg	
JAN	4904710344378	

BPA free Made of BPA-free plastic, stainless steel and silicone rubber

LWU-A171

3 container



Charcoal Gray (HD)

Capacity	
• Rice container	0.61L
• Side dish container	0.34L
• Soup container	0.27L



- Vacuum insulated stainless double wall
- Microwavable containers

Model No.	LWU-A171	3Cups
Capacity	Rice container 0.61L Side dish container 0.34L Soup container 0.27L	
Heat retention	69°C (6h)	
Size / Weight	15.0×14.7×21.4cm / 1.00kg	
Qty/Ctn (Measurement)	6pcs (0.035m³)	
Gross Weight	7.6kg	
JAN	4904710353707	

BPA free Made of BPA-free plastic, stainless steel and silicone rubber



MCA-C025 0.25L



MCI-A028 0.28L

Desktop mugs



Model No.	MCA-C025
Capacity	0.25L
Heat retention	56°C (6h)
Cold retention	12°C (6h)
Size / Weight	7.5×7.5×10.9cm / 0.17kg
Qty/Ctn (Measurement)	20pcs (0.017m³)
Gross Weight	4.8kg
JAN	(AS) 4904710428306 (PO) 4904710428313 (XC) 4904710428344



- Vacuum insulated stainless double wall
- Compact and light to store in bags
- Washable entirely

Model No.	MCI-A028
Capacity	0.28L
Heat retention	8°C (1h)
Cold retention	64°C (1h)
Size / Weight	8.6×11.2×9.1cm / 0.19kg
Qty/Ctn (Measurement)	20pcs (0.024m³)
Gross Weight	4.8kg
JAN	(C) 4904710415757 (Y) 4904710415788 (R) 4904710415764

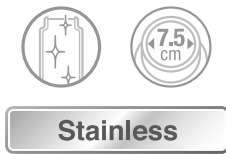


- Vacuum insulated stainless double wall
- Keep hot & cold
- 5 colors to choose from
- Plastic base





Stainless steel handy jugs



- Compact & Light Weight
- Washable
- Super Clean Finish
- Open/Close Lever
- Take-apart stopper

Model No.	PWO-A120	PWO-A160	PWO-A200
Capacity	1.20L	1.60L	2.00L
Heat retention	66°C (10h)	71°C (10h)	74°C (10h)
Cold retention	10°C (10h)	9°C (10h)	8°C (10h)
Size / Weight	13.0x 16.6x 20.8cm / 0.69kg	13.0x 16.6x 24.5cm / 0.76kg	13.0x 16.6x 28.2cm / 0.84kg
Qty/Ctn (Measurement)	6pcs(0.020m)	6pcs (0.020m)	6pcs (0.020m)
Gross Weight	5.3kg	5.9kg	6.4kg
JAN	(W) 4904710428139 (AC) 4904710428146	(W) 4904710428160 (HD) 4904710428177 (AC) 4904710428153	(W) 4904710428184 (HD) 4904710428191

Stainless steel air pump jugs

- MAA-A222 2.2L  
MAA-A302 3.0L  
MAA-A402 4.0L



Stainless (XS)



Easy to dispense

Stainless

The above images are 3.0L.

- Vacuum insulated stainless double wall
- Easy to pump
- Super clean finished process
- Compact and spacious
- 6.9cm wide mouth
- Safety lock function
- Removable pipe
- Removable lid
- 360° swivel base



Model No.	MAA-A222	MAA-A302
Capacity	2.20L	3.00L
Heat retention	69°C (10h)/53°C (24h)*1	74°C (10h)/59°C (24h)*1
Spare refill	—	—
Size / Weight	17.8x24.5x27.2cm/1.40kg	17.8x24.5x31.3cm / 1.60kg
Qty/Ctn (Measurement)	4pcs (0.059m³)	4pcs (0.066m³)
Gross Weight	7.8kg	8.7kg
JAN	4904710353325	4904710353349

Model No.	MAA-A402
Capacity	4.00L
Heat retention	78°C (10h)/63°C (24h)*1
Spare refill	—
Size / Weight	17.8x24.5x37.2cm / 1.80kg
Qty/Ctn (Measurement)	4pcs (0.076m³)
Gross Weight	9.6kg
JAN	4904710353370

Electric Kettle

PFY-A10S

1.0L

PFY-A10W

1.0L



White  
(WA)



Pink  
(P)

- Safety lock valve prevents spilling
- Auto shut off system when it boils water
- Double wall structure with inner container and outer body
- One push removable lid

Model No.	PFY-A10S	PFY-A10W
Capacity	1.0L	1.0L
Available Voltage	220-230V⚡	220V⚡
Electric Rating	1180-1300W	1300W
Size / Weight	14.8×23.0×23.2cm / 1.2kg	14.8×23.0×23.2cm / 1.2kg
Qty/Ctn (Measurement)	6pcs (0.068m³)	6pcs (0.068m³)
Gross Weight	10.2kg	10.0kg
JAN	(WA) 4904710382677 (P) 4904710382660	(WA) 4904710382646 (P) 4904710382653

PCG-G10S

1.0L

NEW

PCG-G10S

1.0L

NEW

PCG-G10S

1.0L

NEW



Urban Gray  
(HU)



Pink  
(P)



White  
(W)

Model No.	PCG-G10S
Capacity	1.0L
Available Voltage	220-230V⚡
Electric Rating	1300-1420W
Size / Weight	14.8×22.6×23.4cm / 1.1kg
Qty/Ctn (Measurement)	6pcs (0.078m³)
Gross Weight	9.6kg
JAN	(HU) 4904710432723 (P) 4904710432730 (W) 4904710432716

- Lock function
- Dispense lock button
- Double wall structure
- Prevention of empty burning
- Auto shut off system

	MKA-K	MCT-K	MCS-A	MCY-K	MCZ-S	MTA-B	MTA-T	MCJ-K
Images								
Surface of inner cylinder								
Antibacterial finished parts	<div><p>Lid gasket / Lid / Button / Spout / Stopper gasket Antibacterial processed JIS Z 2801 (ISO22196)</p><p>Body Antibacterial coating : Outside of the main body JIS Z 2801 (ISO22196)</p></div>	<div><p>Lid gasket / Lid / Button / Spout / Stopper gasket Antibacterial processed JIS Z 2801 (ISO22196)</p><p>Body Antibacterial processed : Coat and base JIS Z 2801 (ISO22196)</p></div>	<div><p>Lid body / Lid cap / Stopper Antibacterial processed JIS Z 2801 (ISO22196)</p></div>	<div><p>Lid / Cap base / inner cap / inner stopper Antibacterial processed JIS Z 2801 (ISO22196)</p></div>	<div><p>Spout / Lid Antibacterial processed JIS Z 2801 (ISO22196)</p></div>	<div><p>Lid gasket / Button / Stopper gasket Antibacterial processed JIS Z 2801 (ISO22196)</p><p>Bottle boot Antibacterial processed : Coat and base JIS Z 2801 (ISO22196)</p></div>	<div><p>Opening for drinking / Stopper / Loop Antibacterial processed JIS Z 2801 (ISO22196)</p></div>	<div><p>Outer lid / Inner lid Antibacterial processed JIS Z 2801 (ISO22196)</p></div>
Series								—

Antibacterial Finished Products

The proportion of bacteria on the surface of the product is 1/100 or less of that on the surface of a non-treated product, and the antibacterial effect remains after durability tests. Antibacterial properties are determined from the results of tests conducted in accordance with the ISO 22196.

If the product passes ISO 22196 (JIS Z 2801) testing under laboratory conditions, it means that has passed the international standard. Furthermore, if it passes SIAA testing under actual use conditions, it can be endorsed by the third party.

Antibacterial Activity Value

Test results of Tiger's antibacterial finished products are 2.0 or higher antibacterial activity value that means the growth of bacteria is prevented by 99% or more.

